



## PRODUCT CATALOG



Call our sales team today,  
to find out how we can partner with your restaurant,  
country club, or catering business.

**(312) 733-1418**

351 N. Justine Street Chicago, IL 60607-1017  
[www.chicagowholesalemeat.com](http://www.chicagowholesalemeat.com)



## TABLE OF CONTENTS

<b>Pork</b> .....	2
<i>Bacon</i> .....	3
<i>Ham</i> .....	3
<i>Pork Belly</i> .....	4
<i>Pork Bones</i> .....	4
<i>Pork Grinds</i> .....	4
<i>Pork Loin</i> .....	5
<i>Pork Offal</i> .....	6
<i>Pork Prepared Meats</i> .....	7
<i>Pork Shoulder</i> .....	8
<i>Whole Pig</i> .....	8



## BACON



### PORK BACON, COMMODITY

**Product ID** P BACON C 18/22, P BACON C 14/18  
**Serving Size** 18/22 Count, 14/18 Count  
**Case Size** 30 Pounds



### PORK APPLEWOOD SMOKED BACON 10/14 COUNT

**Product ID** P BACON A  
**Case Size** 15 Pounds



### PORK CANADIAN BACON

**Product ID** P BACON CAN  
**Case Size** 1 Log, 5 Pounds



### PORK SLAB BACON

**Product ID** P BACON S  
**Case Size** 5 Pounds



### PORK BACON ENDS AND PIECES

**Product ID** P BACON E  
**Case Size** 30 Pounds



### PORK CHERRYWOOD SMOKED BACON 9/11 COUNT

**Product ID** P BACON C  
**Case Size** 15 Pounds

## HAM



### PORK SPIRAL HAM, SMOKED

**Product ID** P HAM SPIR  
**Case Size** 1pc, 12 Pounds Avg  
**Distinction** Deli



### PORK HAM B/I, SMOKED

**Product ID** P HAM SMK B/I  
**Case Size** 1pc, 20 Pounds+ Avg  
**Distinction** Deli



### PORK HAM SEMI-BONELESS, SMOKED

**Product ID** P HAM SMK SEMI  
**Case Size** 1pc, 15 Pounds Avg  
**Distinction** Deli



### PORK HAM, BONELESS PIT HAM, SMOKED

**Product ID** P HAM SMK P  
**Case Size** 1pc, 15 Pounds Avg  
**Distinction** Deli



### PORK HAM, BONELESS, SKINLESS, FRESH

**Product ID** P HAM F BNLS  
**Case Size** 1pc, 10 Pounds+ Avg



### PORK HAM, BONE-IN, SKIN-ON, FRESH

**Product ID** P HAM F B/I  
**Case Size** 1pc, 15 Pounds+ Avg



### PORK HAM HOCK, FRESH

**Product ID** P HOCK F  
**Case Size** 20 Pounds



### PORK HAM HOCK, SMOKED

**Product ID** P HOCK SMK  
**Case Size** 10 Pounds



## PORK HAM, BOILED

**Product ID** P HAM BOIL  
**Case Size** 1pc, 12 Pounds  
**Distinction** Deli



## PORK HAM SHANK (PORK SHANK)

**Product ID** P HAM SH  
**Case Size** 30 Pounds

## PORK BELLY



### PORK BELLY, SINGLE RIB

**Product ID** P BELLY SR  
**Case Size** 1pc, 10 Pounds+ Avg



### PORK BELLY SKIN-ON

**Product ID** P BELLY S/ON  
**Case Size** 1pc, 10 Pounds+ Avg



### PORK BELLY, SKINLESS

**Product ID** P BELLY S/OFF  
**Case Size** 1pc, 10 Pounds+ Avg



### PORK BELLY BONE-IN, RIB BELLY

**Product ID** P BELLY B/I  
**Case Size** 1pc, 10 Pounds+ Avg



### PORK BELLY, SALTED

**Product ID** P BELLY S  
**Case Size** 15 Pounds



### PORK RIB TIP

**Product ID** P RIB T  
**Case Size** 30 Pounds



### PORK SPARE RIBS

**Product ID** P SPARE  
**Case Size** 30 Pounds



### PORK ST LOUIS RIB

**Product ID** P ST LOUIS  
**Case Size** 30 Pounds

## PORK BONES



### PORK HAM FEMUR BONES

**Product ID** P HAM B  
**Case Size** 20 Pounds



### PORK NECK BONES

**Product ID** P NECK  
**Case Size** 30 Pounds

## PORK GRINDS



### PORK, GROUND

**Product ID** P GR  
**Case Size** 10 Pounds

## PORK LOIN



### PORK CHOP, BONE-IN, FRENCHED

**Product ID** P CHOP FR 16, P CHOP FR 14, P CHOP FR 12, P CHOP FR 11, P CHOP FR 10, P CHOP FR 8, P CHOP FR 6

**Serving Size** 16oz, 14oz, 12oz, 11oz, 10oz, 8oz, 6oz

**Case Size** 10 Pounds

**Distinction** Portion Cut



### PORK COUNTRY STYLE RIB

**Product ID** P COUNTRY

**Case Size** 20 Pounds

**Distinction** Portion Cut



### PORK CHOP, BONE-IN, CENTER CUT

**Product ID** P CHOP CC 16, P CHOP CC 14, P CHOP CC 12, P CHOP CC 11, P CHOP CC 10, P CHOP CC 8, P CHOP CC 7, P CHOP CC 6, P CHOP CC 4

**Serving Size** 16oz, 14oz, 12oz, 11oz, 10oz, 8oz, 7oz, 6oz, 4oz

**Case Size** 10 Pounds

**Distinction** Portion Cut



### PORK LOIN, TENDERLOIN

**Product ID** P LOIN TEND

**Case Size** 10 Pounds



### PORK LOIN, BONE-IN, CENTER CUT

**Product ID** P LOIN CC

**Case Size** 2pc, 30 Pounds+ Avg



### PORK RACK, RIB RACK

**Product ID** P RACK

**Case Size** 1pc, 6 Pounds Avg



### PORK CHOP, PORTERHOUSE

**Product ID** P CHOP P 16, P CHOP P 14, P CHOP P 12, P CHOP P 11, P CHOP P 10, P CHOP P 8, P CHOP P 6

**Serving Size** 16oz, 14oz, 12oz, 11oz, 10oz, 8oz, 6oz

**Case Size** 10 Pounds

**Distinction** Portion Cut



### PORK FAT BACK

**Product ID** P FAT BACK

**Case Size** 10 Pounds



### PORK CHOP, BONELESS

**Product ID** P CHOP BNLS 12, P CHOP BNLS 10, P CHOP BNLS 8, P CHOP BNLS 6, P CHOP BNLS 5, P CHOP BNLS 4

**Serving Size** 12oz, 10oz, 8oz, 6oz, 5oz, 4oz

**Case Size** 10 Pounds

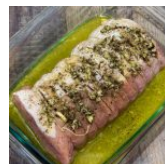
**Distinction** Portion Cut



### PORK LOIN, BONE-IN

**Product ID** P LOIN

**Case Size** 2pc, 40 Pounds+ Avg



### PORK LOIN BONELESS, CANADIAN

**Product ID** P LOIN CAN

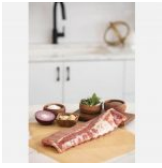
**Case Size** 1pc, 5 Pounds+ Avg



### PORK RACK, RIB RACK, FRENCHED

**Product ID** P RACK F

**Case Size** 1pc, 5 Pounds Avg



## PORK BACK RIBS, 2 POUNDS AND DOWN

**Product ID** P BACK RIB  
**Case Size** 2pcs, 4 Pounds Avg

## PORK OFFAL



### PORK SNOOTS

**Product ID** P SNOOT  
**Case Size** 30 Pounds



### PORK HEAD

**Product ID** P HEAD  
**Case Size** 1pc, 10 Pounds+ Avg



### PORK JOWL'S

**Product ID** P JOWL  
**Case Size** 20 Pounds



### PORK CAUL FAT

**Product ID** P CAUL  
**Case Size** 10 Pounds



### PORK KIDNEY

**Product ID** P KID  
**Case Size** 20 Pounds



### PORK TONGUE

**Product ID** P TONG  
**Case Size** 20 Pounds



### PORK LIVER

**Product ID** P LIVER  
**Case Size** 20 Pounds



### PORK STOMACH

**Product ID** P STOMACH  
**Case Size** 50 Pounds



### PORK INTESTINES

**Product ID** P INTEST  
**Case Size** 30 Pounds



### PORK EARS

**Product ID** P EARS  
**Case Size** 30 Pounds



### PORK BLOOD

**Product ID** P BLOOD  
**Case Size** 1 Gallon



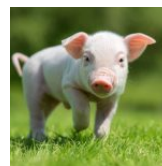
### PORK SKIN

**Product ID** P SKIN  
**Case Size** 10 Pounds



### PORK TAIL

**Product ID** P TAIL  
**Case Size** 30 Pounds



### PORK HEART

**Product ID** P HEART  
**Case Size** 20 Pounds



## PORK FEET

**Product ID** P FEET  
**Case Size** 10 Pounds



## PORK CHEEK MEAT

**Product ID** P CHEEK  
**Case Size** 10 Pounds

## PORK PREPARED MEATS



## PORK PEPPERONI

**Product ID** P PEP  
**Case Size** 10 Pounds  
**Distinction** Deli



## PORK CAPOCOLLO HOT

**Product ID** P CAP H  
**Case Size** 1 Log, 5 Pounds Avg  
**Distinction** Deli



## VOLPI PROSCIUTTO

**Product ID** P PRO  
**Case Size** 1pc, 12 Pounds+ Avg  
**Distinction** Deli



## PORK SOPRESSATA

**Product ID** P SOP  
**Case Size** 1 Log, 5 Pounds Avg  
**Distinction** Deli



## VOLPI MORTADELLA

**Product ID** P MORT  
**Case Size** 1pc, 5 Pounds Avg  
**Distinction** Deli



## VOLPI PANCETTA

**Product ID** P PANCETTA  
**Case Size** 2pc, 8 Pounds Avg  
**Distinction** Deli



## PORK HOT LINKS

**Product ID** P H LINK  
**Case Size** 10 Pounds  
**Distinction** Sausage



## PORK ITALIAN SAUSAGE, STUFFED INTO A CASING

**Product ID** P I SAUSAGE R  
**Case Size** 10 Pounds  
**Distinction** Sausage



## PORK CHORIZO

**Product ID** P CHOR  
**Case Size** 1 Pounds  
**Distinction** Sausage



## PORK ITALIAN SAUSAGE, BULK PACK

**Product ID** P I SAUSAGE B  
**Case Size** 10 Pounds  
**Distinction** Sausage



## PORK BRATWURST

**Product ID** P BRAT  
**Case Size** 10 Pounds  
**Distinction** Sausage



## PORK ANDOUILLE SAUSAGE

**Product ID** P ANDU  
**Case Size** 10 Pounds  
**Distinction** Sausage



## PORK POLISH SAUSAGE

**Product ID** P POLISH  
**Case Size** 10 Pounds  
**Distinction** Sausage



## PORK BREAKFAST SAUSAGE LINK

**Product ID** PB LINK 2, PB LINK 1  
**Serving Size** 2oz, 1oz  
**Case Size** 12 Pounds  
**Distinction** Sausage





## PORK BREAKFAST SAUSAGE LINK 2OZ, MAPLE FLAVOR

**Product ID** P B LINK M  
**Case Size** 10 Pounds  
**Distinction** Sausage



## PORK BREAKFAST SAUSAGE, BULK PACK

**Product ID** P B BULK  
**Case Size** 10 Pounds  
**Distinction** Sausage



## PORK BREAKFAST SAUSAGE PATTY 2OZ

**Product ID** P B PATTY  
**Case Size** 12 Pounds  
**Distinction** Sausage

## PORK SHOULDER



### PORK STEW MEAT

**Product ID** P STEW  
**Case Size** 10 Pounds



### PORK BUTT, CT (CLOSE TRIM)

**Product ID** P BUTT CT  
**Case Size** 2pc, 5 Pounds+ Avg



### PORK BUTT, B/I STEAK

**Product ID** P BUTT S  
**Case Size** 10 Pounds  
**Distinction** Portion Cut



### PORK CUSHION MEAT

**Product ID** P CUSHION  
**Case Size** 30 Pounds



### PORK PICNIC SHOULDER, BONELESS

**Product ID** P PICNIC  
**Case Size** 2pc, 15 Pounds+ Avg



### PORK BUTTS, BONE-IN

**Product ID** P BUTT B/I  
**Case Size** 2pc, 20 Pounds Avg



### PORK BUTT, BONELESS

**Product ID** P BUTT BNLS  
**Case Size** 2pc, 15 Pounds+ Avg

## WHOLE PIG



### PIG, WHOLE FOR ROAST

**Product ID** P PIG  
**Case Size** Request Sizing



### PIG, SUCKLING PIG

**Product ID** P PIG S  
**Case Size** Request Sizing