



PRODUCT CATALOG



Call our sales team today,
to find out how we can partner with your restaurant,
country club, or catering business.

(312) 733-1418

351 N. Justine Street Chicago, IL 60607-1017
www.chicagowholesalemeat.com



TABLE OF CONTENTS

Lamb	2
<i>Lamb Bones</i>	3
<i>Lamb Breast/Flank</i>	3
<i>Lamb Grinds</i>	3
<i>Lamb Leg</i>	3
<i>Lamb Loin</i>	3
<i>Lamb Offal</i>	4
<i>Lamb Rib</i>	4
<i>Lamb Shank</i>	5
<i>Lamb Shoulder</i>	5



LAMB BONES



LAMB BONES, MIXED

Product ID L BONES M
Case Size 20 Pounds



LAMB BONES, FEMUR

Product ID L BONES F
Case Size 20 Pounds

LAMB BREAST/FLANK



LAMB FLANK

Product ID L FLANK
Case Size 10 Pounds



LAMB BREAST BONELESS (BELLY)

Product ID L BREAST BNLS
Case Size 10 Pounds



LAMB BREAST, DENVER RIBS

Product ID L BREAST D
Case Size 10 Pounds



LAMB BREAST BONE-IN

Product ID L BREAST B/I
Case Size 10 Pounds

LAMB GRINDS



LAMB, GROUND

Product ID L GR
Case Size 10 Pounds

LAMB LEG



LAMB LEG

Product ID L LEG
Case Size 1pc, 12 Pounds+ Avg



LAMB LEG BONELESS

Product ID L LEG BNLS
Case Size 1pc, 8 Pounds+ Avg

LAMB LOIN



LAMB LOIN CHOP

Product ID L LOIN C 2", L LOIN C 1.5"
Serving Size 2", 1.5"
Case Size 10 Pounds
Distinction Portion Cut



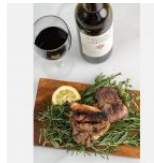
LAMB LOIN, TENDERLOIN

Product ID L LOIN TEND
Case Size 10 Pounds



LAMB LOIN, IMPORTED, BONELESS

Product ID L LOIN BNLS IMP
Case Size 20 Pounds



LAMB LOIN, DOMESTIC, BONELESS

Product ID L LOIN BNLS
Case Size 1pc, 10 Pounds+ Avg

LAMB OFFAL



LAMB SPLEEN

Product ID L SPLEEN
Case Size 10 Pounds



LAMB CAUL FAT

Product ID L CAUL
Case Size 10 Pounds



LAMB HEADS

Product ID L HEADS
Case Size 3pc



LAMB KIDNEY

Product ID L KID
Case Size 10 Pounds



LAMB TRIPE

Product ID L TRIPE
Case Size 10 Pounds



LAMB TONGUE

Product ID L TONG
Case Size 10 Pounds



LAMB SWEETBREAD

Product ID L SWEET
Case Size 10 Pounds



LAMB LIVER

Product ID L LIVER
Case Size 10 Pounds



LAMB HEART

Product ID L HEART
Case Size 10 Pounds



LAMB NECK

Product ID L NECK
Case Size 10 Pounds

LAMB RIB



LAMB RIB CHOP, DOMESTIC

Product ID L RIB C
Case Size 18pcs, 10 Pounds+ Avg
Distinction Portion Cut



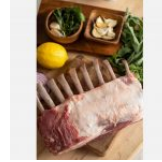
LAMB RIB CHOP, DOMESTIC, FRENCHED

Product ID L RIB C F
Case Size 18pcs
Distinction Portion Cut



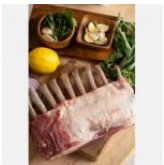
LAMB RACK DOMESTIC, CHIME-OFF

Product ID L RACK D C
Case Size 2pcs, 15 Pounds+ Avg



LAMB RACK DOMESTIC, FRENCHED

Product ID L RACK D F
Case Size 2pcs, 10 Pounds+ Avg



LAMB RACK, IMPORTED, FRENCHED

Product ID L RACK IMP
Case Size 1pc, 24-26oz

LAMB SHANK



LAMB SHANK, HIND, OSSO BUCCO

Product ID L SHANK H O
Case Size 4pcs
Distinction Portion Cut



LAMB SHANK, FORESHANK

Product ID L SHANK F
Case Size 4pcs



LAMB SHANK, HIND

Product ID L SHANK H
Case Size 4pcs

LAMB SHOULDER



LAMB SHOULDER CHOP, BONE-IN

Product ID L SH C
Case Size 10 Pounds
Distinction Portion Cut



LAMB STEW

Product ID L STEW
Case Size 10 Pounds



LAMB SHOULDER BONELESS

Product ID L SH BNLS
Case Size 1pc, 5 Pounds+ Avg



LAMB SHOULDER B/I

Product ID L SH B/I
Case Size 2pcs, 20 Pounds+ Avg